

FIBER OPTIC ACCESSORIES

OPTICAL FIBER DISTRIBUTION FRAME MAX CAPACITY FC, LC, SC (504-1440)

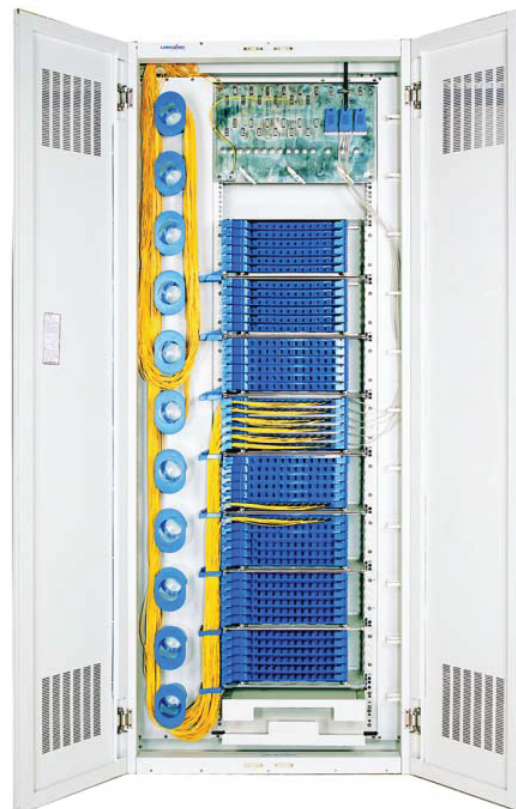


DESCRIPTION

Focomm optical fiber distribution frame F-GPX82-4 is made of top quality steel and deformed aluminum alloy and treated with galvanizing, oxidation and electrostatic plastic spraying. The frame has solid structure and pleasing appearance.

FEATURES

- Fully-closed structure with the advantages of good performance of dust-proof, pleasing and neat appearance.
- Enough space for fiber distribution and storage space and very easy for installation and operations.
- Fully front side operation, convenient for maintenances.
- Curvature radius of 40mm.
- Cable inlet system is installed on the top of the frame which has excellent performances for fixing the cables.
- Cables can be inlet either from the top or the bottom of the frame subject to different requirements.
- This frame is suitable for both common bundle cables and ribbon type cables.
- Reliable cable fixture cover and earth protection device provided.
- Integrated splice and distribution unit is adopted. Each unit holds up to 12 FC adapters and up to 24 SC/LC adapters. All units have specially designed slots and can be easily pulled out for operation at any time.
- Fiber separation hook of the splice and distribution module (the hook on the left) can be disassembled to fit for both wide and narrow structure frame.
- Every 6 units make up a module. Dual SC adapters could double the capacity of Splice and distribution units' capacities to max 24FO each.
- All adapters are installed 40 degrees inclining to the operation surface which is easier for connecting and also protect installers' eyes from the lights.
- No screw needed for installing adapters.



OPERATION CONDITIONS

- Temperature -5oC ~ 60oC
- Humidity 90% at 30oC
- Air Pressure 70kPa – 106kPa

ORDER INFORMATION

PRODUCT	PART NUMBER
(FC) Optical Fiber Distribution Frame 504 Core 2000*840*300 (H*W*D)	F-GPX82-4-3CW-504
(FC) Optical Fiber Distribution Frame 576 Core 2200*840*300 (H*W*D)	F-GPX82-4-2CW-576
(FC) Optical Fiber Distribution Frame 720 Core 2600*840*300 (H*W*D)	F-GPX82-4-1CW-720
(LC/SC) Optical Fiber Distribution Frame 1008 Core 2000*840*300 (H*W*D)	F-GPX82-4-3CW-1008
(LC/SC) Optical Fiber Distribution Frame 1152 Core 2200*840*300 (H*W*D)	F-GPX82-4-2CW-1152
(LC/SC) Optical Fiber Distribution Frame 1440 Core 2600*840*300 (H*W*D)	F-GPX82-4-1CW-1440

FOCOMM (THAILAND) CO., LTD

12 Soi Sukhaphiban 5 Soi 5 Yaek 3, Tha Raeng Subdistrict, Bang Khen District Bangkok 10220

Email : info@focomm-cabling.com www.focomm-cabling.com

