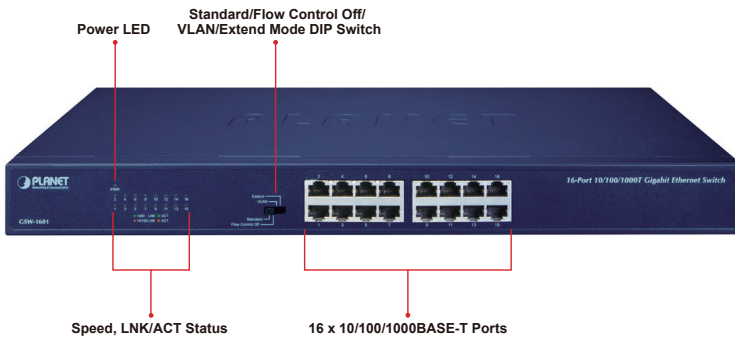


16-Port 10/100/1000BASE-T Gigabit Ethernet Switch



Cost-effective Gigabit Solution for Enterprise Backbone and Data Center Networking

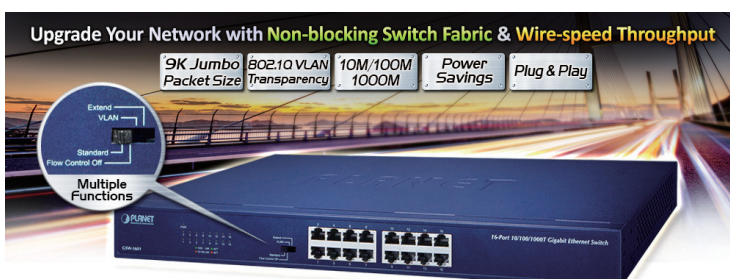
PLANET GSW-1601 Gigabit Ethernet Switch provides 16 RJ45 10/100/1000Mbps ports for high-speed network connectivity. It can automatically identify and determine the correct transmission speed and half/full duplex mode of the attached devices with its 16 Gigabit ports that support 9K jumbo frame feature. Therefore, the GSW-1601 can handle extremely large amounts of data transmission in a secure topology linking to a backbone or high-power servers.



Brand-new Hardware DIP Switch for Functional Operation Modes Selection

The new hardware version of the GSW-1601 offers “Standard”, “Flow Control Off”, “VLAN” and “Extend” modes.

DIP Switch Mode	Function
Standard (default)	This mode makes the Gigabit Ethernet Switch operate as a general switch and all ports operate at 10/100/1000Mbps auto-negotiation.
Flow Control Off	This mode disables the Gigabit Ethernet Switch flow control function.
VLAN	This mode makes the GSW-1601 operate as a VLAN isolation switch and 1. Port 1 to port 14 will isolate respectively. 2. Port 1 to port 14 can only communicate with port 15 and port 16 (uplink port).
Extend	This mode makes the GSW-1601 operate as a distance extension switch and port 1 to port 8 can only transmit distance of 200m at speed of 10Mbps.



Physical Port

- 16 10/100/1000BASE-T Gigabit Ethernet ports
- Supports auto MDI/MDI-X function

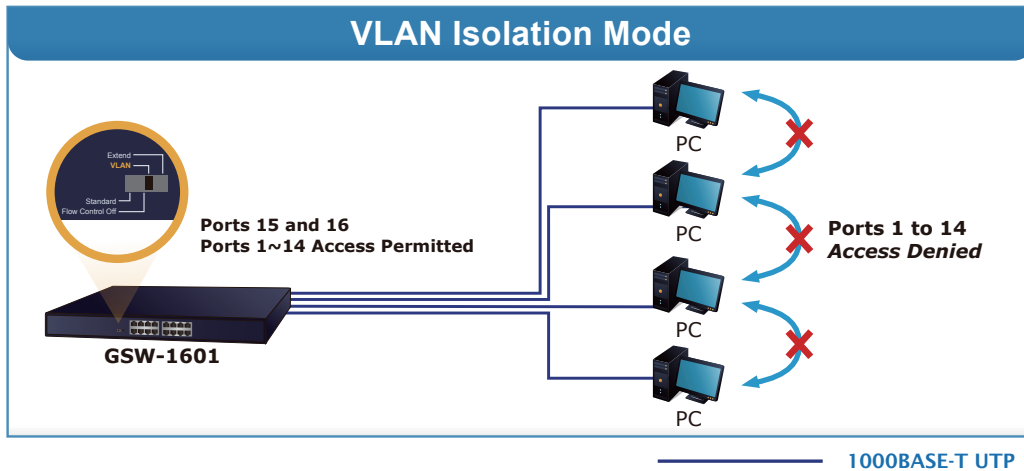
Layer 2 Features

- Complies with IEEE 802.3, 10BASE-T, IEEE 802.3u 100BASE-TX, IEEE 802.3ab 1000BASE-T Ethernet standards
- Features Store-and-Forward mode with wire-speed filtering and forwarding rates
- Integrated address look-up engine, supporting 8K absolute MAC addresses
- 9K jumbo packet support
- Power saving ability for Green networking
- IEEE 802.1Q VLAN packet transparency support
- IEEE 802.3x flow control for full duplex operation and back pressure for half duplex operation
- Hardware-based 10/100BASE-TX, half/full duplex and 1000BASE-T full duplex mode, flow control and auto-negotiation
- Automatic address learning and address aging
- Supports CSMA/CD protocol

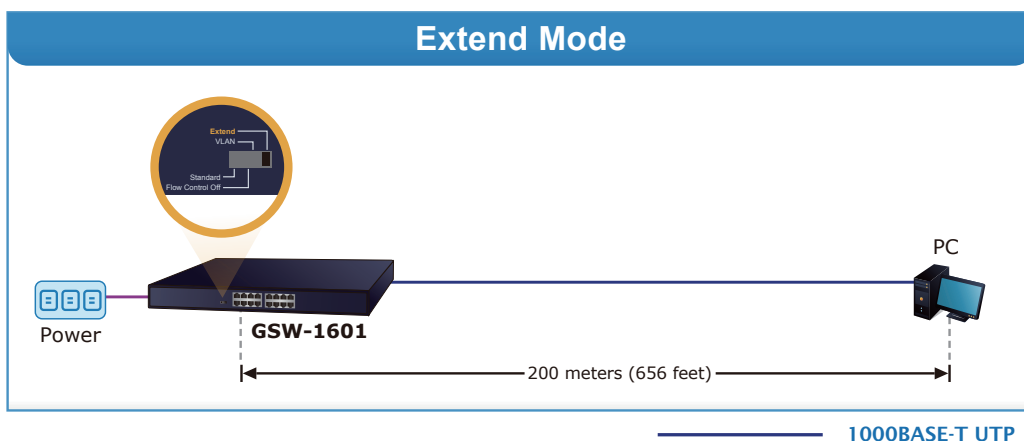
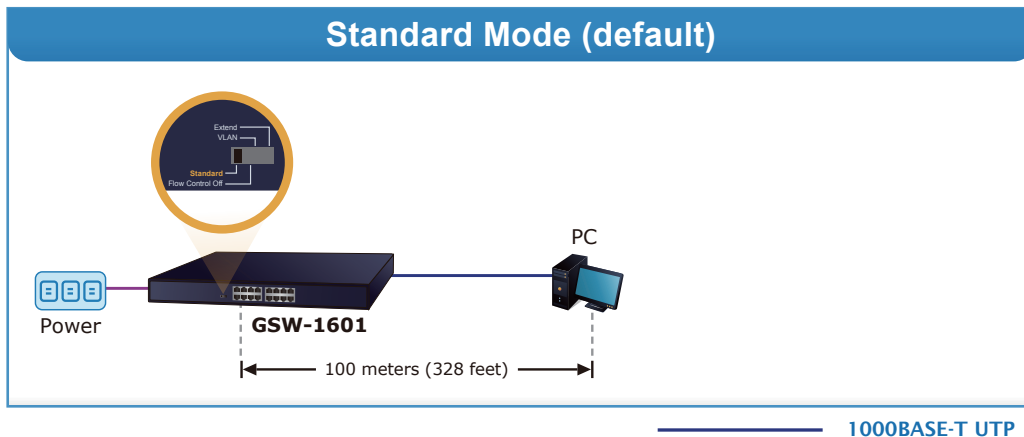
Hardware Features

- 100~240V AC, 0.16A, 50~60Hz universal power input
- DIP switch for standard/flow control off/VLAN/Extend mode selection
- FCC, CE class A compliant

The GSW-1601 operates as a normal Gigabit Ethernet Switch in the "Standard" operation mode. The "VLAN" operation mode features port-based VLAN function that can help to prevent the connected clients' multicast or broadcast storm from influencing each other.



In the "Extend" operation mode, the GSW-1601 operates on a per-port basis at 10Mbps duplex operation but can transmit data over a distance of up to 200 meters overcoming the 100m limit on Ethernet UTP cable. With this brand-new feature, the GSW-1601 provides an additional solution for distance extension, thus saving the cost of Ethernet cable installation. Its VLAN isolation function isolates each port so as to prevent broadcast storm and defend DHCP spoofing in the "Extend" operation mode.



High Performance

The GSW-1601 provides a high-performance switch architecture that is capable of providing the non-blocking switch fabric and wire-speed throughput as high as 32Gbps, which greatly simplifies the tasks of upgrading the LAN for catering to increasing bandwidth demands. Besides, the Flow Control function of the GSW-1601 enables routers and servers to directly connect to the Switch for fast and reliable data transfer.

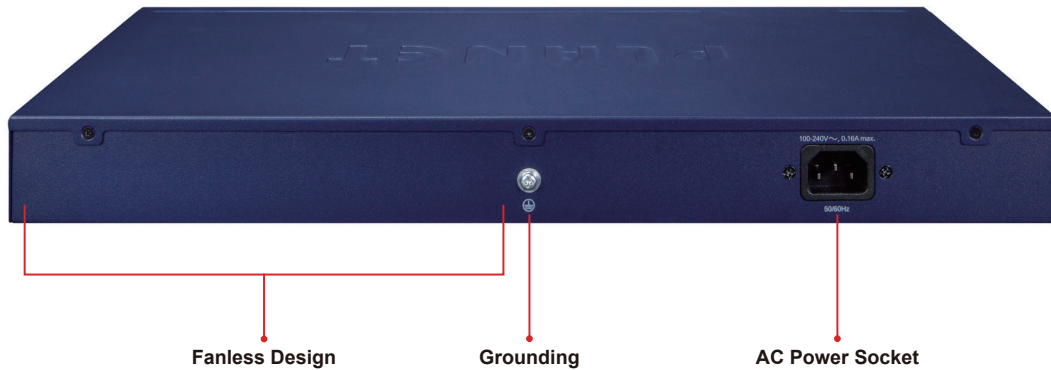
All the RJ45 copper interfaces of the GSW-1601 support 10/100/1000Mbps auto-negotiation for optimal speed detection through RJ45 Category 6, 5 or 5e cables. It also supports standard for auto-MDI/MDI-X that can detect the type of connection to any Ethernet device without requiring special straight or crossover cables.

Excellent Traffic Transmission

The GSW-1601 supports Store-and-Forward forwarding scheme to ensure low latency and high data integrity, which eliminates unnecessary traffic and relieves congestion on critical network paths. With an intelligent address recognition algorithm, the GSW-1601 recognizes up to 8K different MAC addresses. The high data throughput and 32Gbps internal switching fabric make it ideal for most Gigabit environments, especially when network is upgraded to a Gigabit environment.

Fanless Design

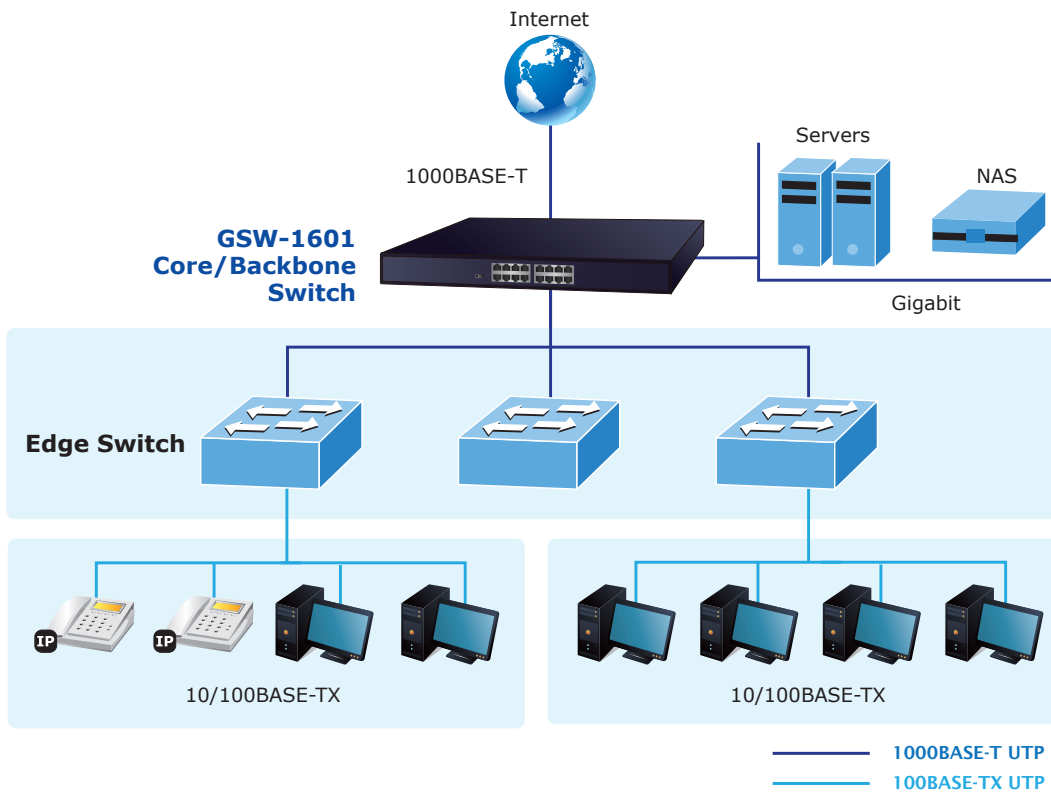
With its good ventilation design, the GSW-1601 is able to operate all along without a fan, thus reducing substantial power consumption and creating a noiseless environment. The GSW-1601 is definitely the best choice for any working environment without affecting its performance.



Applications

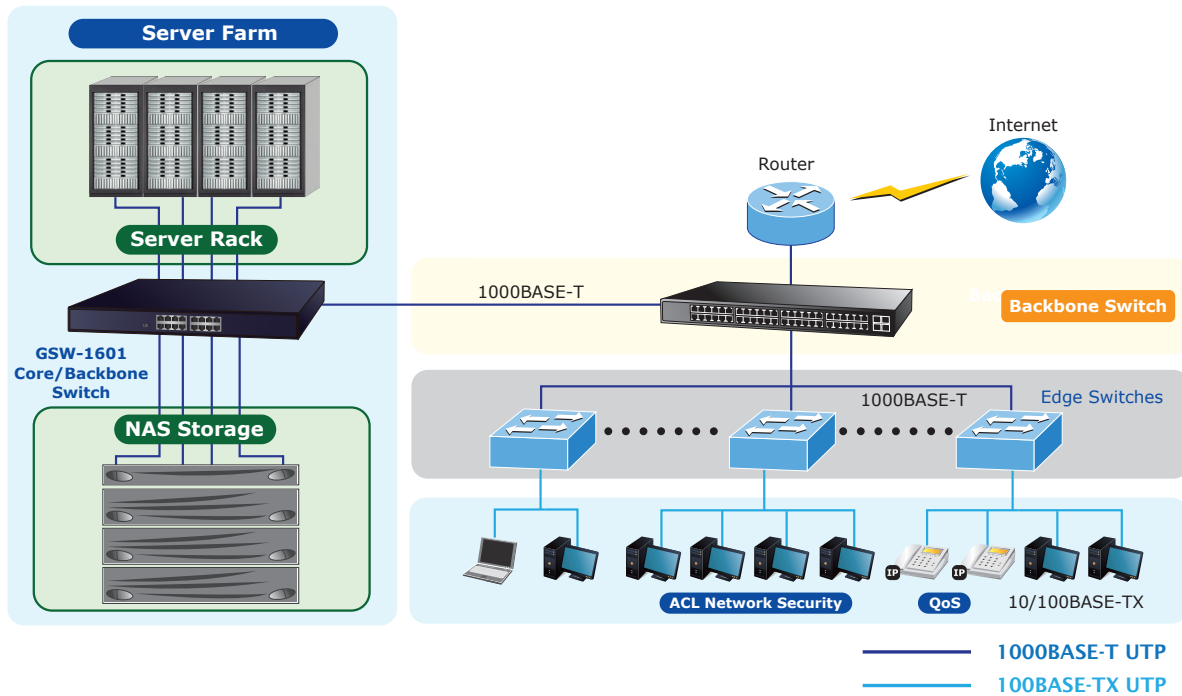
Backbone Switch

With up to 32 Gigabits per second of non-blocking switch fabric, the GSW-1601 can easily provide high bandwidth for both today's and future requirements.



Server Farm Switch

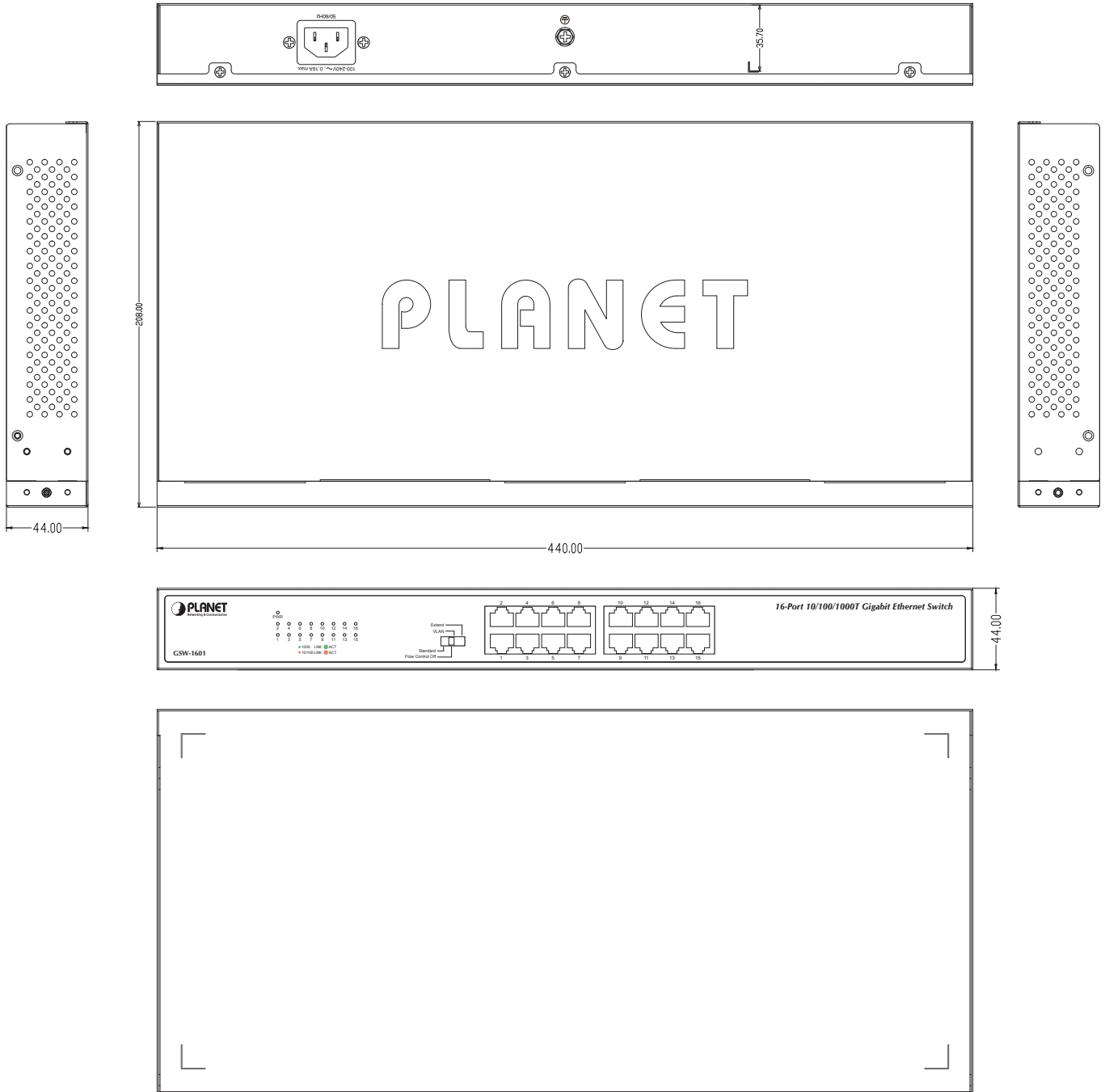
Providing 16 Gigabit Ethernet ports, the GSW-1601 is ideal to be used as a server farm switch connecting to your servers and powerful desktops.



Product Specifications

Product	GSW-1601
Hardware Specifications	
Hardware Version	9
10/100/1000BASE-T MDI/MDIX Ports	16
Throughput (packet per second)	23.8Mpps
Switch Fabric	32Gbps
Weight	1.8kg
Power Consumption/Dissipation	9.4 watts/32 BTU
Power Requirements	100~240V AC, 0.16A, 50-60Hz
Dimensions (W x D x H)	440 x 208 x 44mm, 1U height
Switch Processing Scheme	Store-and-Forward
Address Table	8K entries
Jumbo Packet Size	9K
Flow Control	Back pressure for half duplex IEEE 802.3x Pause Frame for full duplex
DIP Switch	Operation mode selection <ul style="list-style-type: none"> ■ Standard ■ Flow control off ■ VLAN ■ Extend
Standards Conformance	
Regulatory Compliance	FCC Part 15 Class A, CE
Standards Compliance	IEEE 802.3 (Ethernet) IEEE 802.3u (Fast Ethernet) IEEE 802.3ab (Gigabit Ethernet) IEEE 802.3x (Full-Duplex Flow Control) IEEE 802.3az Energy Efficient Ethernet (EEE)
Environment	
Operating	Operating Temperature: 0~50 degrees C Relative Humidity: 5% to 95% (non-condensing)
Storage	Temperature: -10~70 degrees C Relative Humidity: 5% to 95% (non-condensing)

Dimensions



Unit: mm

Ordering Information

GSW-1601 16-Port 10/100/1000BASE-T Gigabit Ethernet Switch

Related Products

GSW-2401 24-Port 10/100/1000BASE-T Gigabit Ethernet Switch

PLANET Technology Corporation

11F., No.96, Minquan Rd., Xindian Dist., New Taipei City
231, Taiwan (R.O.C.)

Tel: 886-2-2219-9518

Email: sales@planet.com.tw

Fax: 886-2-2219-9528

www.planet.com.tw



PLANET reserves the right to change specifications without prior notice. All brand names and trademarks are property of their respective owners. Copyright © 2020 PLANET Technology Corp. All rights reserved.

GSW-1601