

# 48V 802.3af/at Fiber PoE Switch

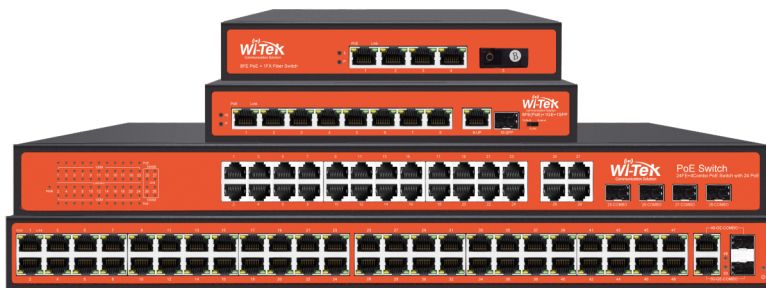
WI-PS105F | WI-PS110F | WI-PS128GF | WI-PS150GF

## Overview

Wi-Tek 48V 802.3af/at fiber PoE switches are unmanaged switches which are play and play and easy to use for CCTV surveillance. They are ideal for deployment in environments that require uninterrupted running of network applications and a high level of performance. In addition, these switches offer Power over Ethernet (PoE) solutions to provide both electrical power and network connectivity to PoE-capable devices, such as IP phones and wireless APs.

## Features

- Unmanaged PoE Switch  
Plug and play, zero configuration.
- Support 802.3af/at 30W PoE  
The IP-camera can be powered up and transmit data by one Ethernet port and cable.
- Ports isolation via VLAN Mode  
All downlink ports are isolated from each other, but can communicate with uplink ports.
- 250m transmission via Extend Mode  
The transmission distance of PoE ports can be up to 250m, but the rate is limited to 10Mbps.



# Specifications



HARDWARE FEATURES	WI-PS105F	WI-PS110F	WI-PS128GF	WI-PS150GF
Hardware Version	V1	V2	V1	V1
Interface	4 100Mbps RJ45 PoE+ Ports 1 1000Mbps SC Fiber	8 100Mbps RJ45 PoE+ Ports 1 1000Mbps Combo Port	24 100Mbps RJ45 PoE+ Ports 4 1000Mbps Combo Ports	48 100Mbps RJ45 PoE+ Ports 2 1000Mbps Combo Ports
Fan Quantity	Fanless		2 Fans	
Power Budget	65W	150W	350W	700W
Power Supply	AC110~240V 50/60HZ	AC110-265V 50/60HZ	AC110-240V 50/60HZ	AC110-265V 50/60HZ
PoE Standard	802.3af/at			
DIP Switch	No	Default/VLAN/Extend	No	
Switching Capacity	4.8Gbps	3.6Gbps	12.8Gbps	13.6Gbps
Mac Address Table	2k	4k	8k	16k
Packet Forwarding Rate	4.17Mbps	2.68Mbps	11.65Mbps	10.11Mbps
Buffer	768Kb		2Mb	4Mb
Jumbo Frame	10240Bytes			
Protection Level	6kV Lightning protection 6kV ESD Contact discharge			
SOFTWARE FEATURES				
Transmission Method	Store-And-Forward			
Advanced Functions	Priority Function Mac Address Auto-Learning And Auto-Aging Store and forward IEEE 802.3x flow control for Full-duplex Mode Backpressure for Half-duplex Mode			
OTHERS				
Certification	CE, FCC, RoHS			
Package Dimension	190mm*130mm*35mm	210mm*140mm*45mm	440mm*290mm*45mm	440mm*290mm*45mm
Package Contents	1 × PoE Switch 1 × Power cord 1 × Wall Mount Kit 1 × Installation Guide	1 × PoE Switch 1 × Power cord 1 × Wall Mount Kit 1 × Installation Guide	1 × PoE Switch 1 × Power cord 1 × Rack Mount Kit 1 × Installation Guide	1 × PoE Switch 1 × Power cord 1 × Rack Mount Kit 1 × Installation Guide
Working Temperature	Operating Temperature: -10°C-55°C Storage Temperature: -40°C-70°C Operating Humidity: 10-90% RH non-condensing Storage Humidity: 5-90% RH non-condensing			



## Wireless-Tek Technology Limited

Address: Biaofang Technology Building 402, Bao'an street,  
Baoan District, Shenzhen City, Guangdong, China

Website: [www.wireless-tek.com](http://www.wireless-tek.com)

Tel: 86-0755-32811290

Email: [sales@wireless-tek.com](mailto:sales@wireless-tek.com)

Technical Support: [tech@wireless-tek.com](mailto:tech@wireless-tek.com)



Technical Support



Cloud Management



Company Website