

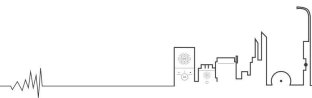
## XC-9603 IP Paging Adaptor



SPON XC-9603 IP paging adaptor is SIP enabled multifunctional IP audio device dedicated for industry users. It can convert voice streams from a SIP paging system or IP PBX system to analogue sounds for background music, public address, etc. With the compact hardware design, open standard SIP protocol support, rich functionality and high performance.

### MAIN FUNCTIONS

1. Easy configuration using the intuitive web interface or DevConfig Tool .
2. Compatible with most analog amplifiers in the market .
3. Built-in 60 watt or 120 watt class-D digital amplifier module , 4 $\Omega$ /8 $\Omega$  passivespeaker can be driven in series or parallel .
4. Compatible with standard SIP protocol, it can be easily integrated into mainstream VoIP telephone system(Yeastar、 Asterisk、 Cisso.etc).
5. Support external audio source collection .
6. Support to receive live voice announcement from the 3-rd party VOIP telephone system or SPON centralized management software.
7. Support offline timed broadcast without server relies.
8. Support Relay I/O port to connect with the 3-rd party Firm alarm system .
9. Support dynamic volume control to get a continuous crystal clear voice .



## SPECIFICATION

### Power Parameters

---

Power Supply:DC 24V/2.7A

Standby Power Consumption:≤3W

### Audio Parameters

---

Audio Codec:G.711 A-law, G.711  $\mu$ -law, G.729, PCM/L16

S/N (Signal-to-Noise) Ratio:≥86dB

Audio Sampling & Bit Rate:8kHz~44.1kHz, 16bit, 8kbps~320kbps

THD (Total Harmonic Distortion):≤0.3% @ 1kHz

Frequency Response:50Hz~20kHz

### Network Parameters

---

Network I/F:10BASE-T/100BASE-TX RJ45

Network Protocol:SIP (RFC3261), HTTP, TCP/IP, UDP, ARP, ICMP, IGMP

Configuration Method:Web Interface or DevConfig Tool

### Mechanical&Environment Properties

---

Mounting Method:Wall-Mounted or Desktop

Installation Environment:Dry Indoor Locations Only

Operating Temperature:-20℃~55℃ (-4°F~131°F)

Storage Temperature:-40℃~65℃ (-40°F~149°F)

Operating Humidity:10%~90% RH non-condensing

Casing Material:

Color:Black

Dimensions:140x71x43mm

Weight:0.4kg

### Accessories

---

Standard Accessories: Pluggable Terminal Block Connector (2-pin)

Pluggable Terminal Block Connector (4-pin)

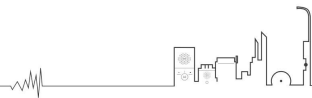
Optional Accessories: DC 24V/2.7A Power Adapter (Full English Marking)

Power Cord (IEC C13 Female - Type A/C/G power plug)

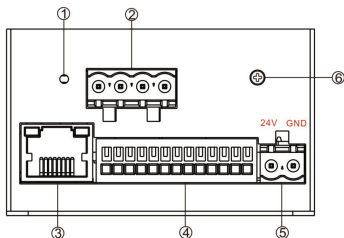
### Compliance

---

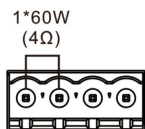
Approved Standards: EN 55032:2015, EN 55035:2017



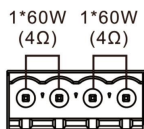
## INTERFACE DESCRIPTION



- ① Reset Button
- ② Amplifier Output Interface
- ③ Network Interface
- ④ Synthesis Interface (Line input, Line output, Relay input, Relay output, Status Indicator Light, MIC interface)
- ⑤ Power Input Interface
- ⑥ Ground Terminal.



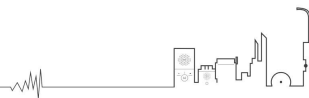
【60W Power】



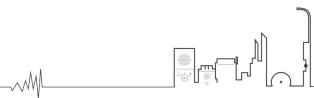
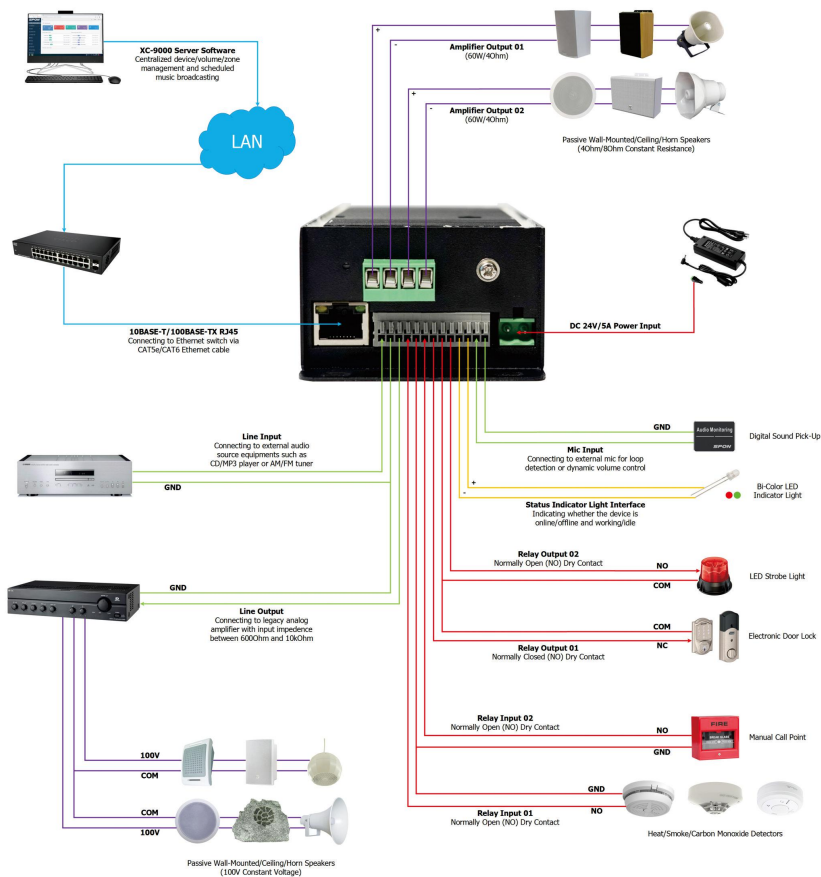
【120W Power】

The built-in 1×60 or 2×60-watt class-D digital amplifier module of the IP paging adaptor enables the device to drive multiple connection mode of passive loudspeaker. For detail , please take the table for reference:

Power Output	Loudspeaker	Connection Mode	Recommend Passive Speaker
60w	1×60W/4Ω	Direct	-
	2×30W/8Ω	Parallel	NAC-2503 Passive Horn Speaker (30W/8Ω)
	4×15W/4Ω	Series-parallel	-
120w	1×120W/4Ω	Direct	-
	2×60W/8Ω	Parallel	-
	2×50W/8Ω	Parallel	NAC-2506 Passive Horn Speaker (50W/8Ω)
	4×30W/4Ω	Series-parallel	-
	8×15W/8Ω	Series-parallel	NAC-2509 Passive Horn Speaker (15W/8Ω)
	8×10W/8Ω	Series-parallel	NAC-301C Passive Wall-Mounted Speaker (10W/8Ω) NAC-301F Passive Wall-Mounted Speaker (10W/8Ω) NAC-2507 Passive Horn Speaker (10W/8Ω)



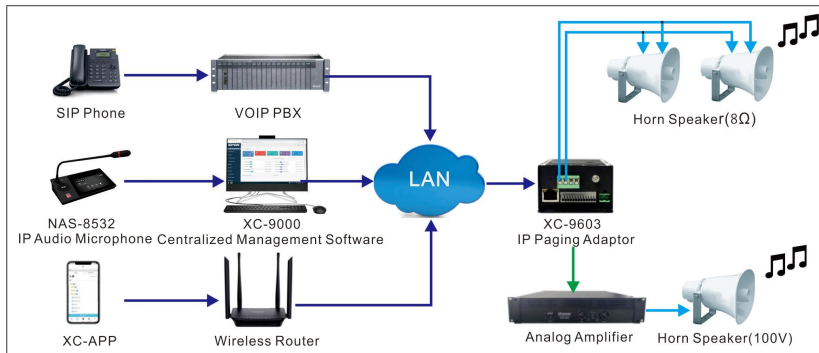
# CONNECTION DIAGRAM



## TYPICAL APPLICATION

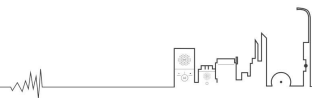
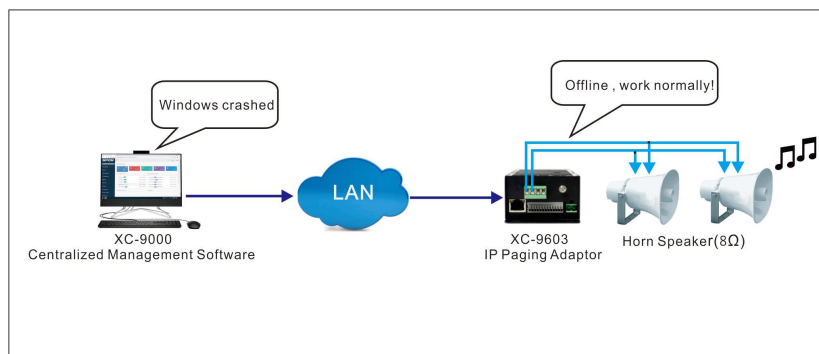
## APPLICATION 1

The IP paging adaptor XC-9603 can receive real-time voice announcement initiated by the 3-rd party VOIP telephone、SPON IP paging microphone/APP(Windows、Android/IOS),etc. With built-in amplifier and line output interface, the voice can be transmitted to external passive speaker for amplification.



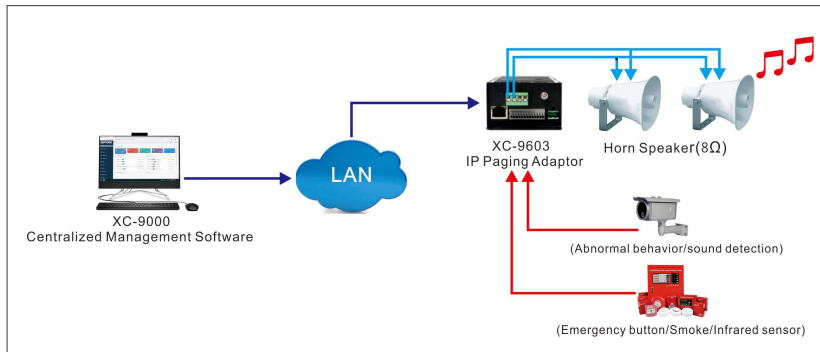
## APPLICATION 2

The IP paging adaptor XC-9603 support to receive offline timed broadcasting , the offline timed tasks need to be pushed to the FTP of XC-9603, when the windwos crashed , the system can normally work .

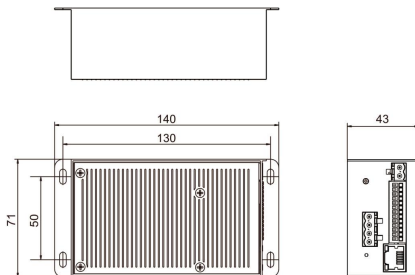


## APPLICATION 3

The IP paging adaptor XC-9603 support to automatic broadcast alarm tone when receiving relay input signal from the 3-rd party system (For example ,IP camera of surveillance system 、 Emergence button of Fire alarm system) , the alarm tone need to be pre-uploaded to the FTP of XC-9603 .



## DIMENSION DRAWING



The IP paging adaptor xc-9603 is suitable for wall mounting. Four plastic expansion sleeves and four m3 \* 4 half round head tapping screws are used to fix the equipment at the required position on the wall according to the following appearance installation dimension drawing.

