

S-HZ33-IR IR Camera Housing

- Smart uniform irradiation solution improves image quality & monitoring effect.
- Leading IR technology provides high efficiency and long life span of LED
- Accurate constant circuit drive develops excellent performance of product
- Power and day/night switch manually controlled
- High power LED light sources for night vision camera
- Indoor/outdoor use, all-weather use.
- High integrated solution for easy installation and saving cost
- 3 years warranty

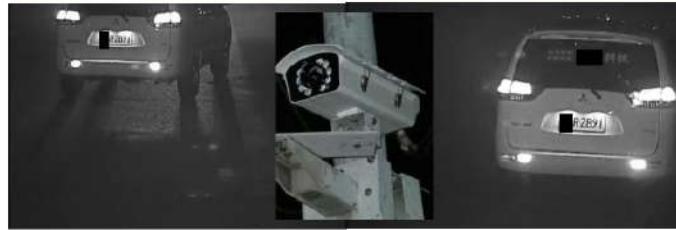
Technical Specification

Quantity of LED	10PCS 2W High Power IR LED
Wavelength	850nm
Beam Angle	15°- 90°
IR Distance	160m-50m
Day/night Switch	CDS 10-20lux ±10% (adjustable)
Input Voltage	AC110-220V
Output Voltage	DC12V 1000mA
Power Consumption	22W (adjustable)
Panel	Tempered glass panel
Housing	Aluminum Die Casting Housing
Bracket	Bottom mount bracket
Working Temperature	-40°C to +60°C (-50°C to +60°C with heater)
Cooling	Air cooling internal circulation
Blower	Included
Protection Level	IP66
Color	Beige
N.W	3.3KG
G.W	3.65KG
Packing Dimension	482*225*170mm



Viewing picture at night

No street light Horizontal distance: 25m-45m Vertical height: 3.5m Speed of vehicle: 110km/hr



S-HZ33-IR



Product Certificate



Installation

1. Internal Picture



LED board+Cooling aluminium Camera Holder

2. Dimension of internal space

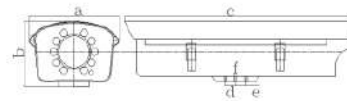


Lens size: φ57mm
Length: 30mm(φ57mm) +200mm
Width: 90mm
Height: 16mm (camera holder to bottom of lens)+58mm(lens)
+16mm(top of lens to top of led board)

3. Control Interface



Drawing



a: 190mm b: 132mm c: 445mm
d: 20mm e: 20mm f: 6mm

Model for Selection

Model	Angle	IR distance (850nm)
S-HZ33-15-A-IR	15°	160m
S-HZ33-30-A-IR	30°	120m
S-HZ33-45-A-IR	45°	90m
S-HZ33-60-A-IR	60°	80m
S-HZ33-90-A-IR	90°	50m

*IR distance is tested by Sony 1/3 CCD Camera with 0.01LUX.

To achieve the distance needed, please pay attention to your camera specification and lens before purchase. It is normal phenomenon that distance may vary due to different cameras and lens.